

**RELAÇÃO DO AÇO**

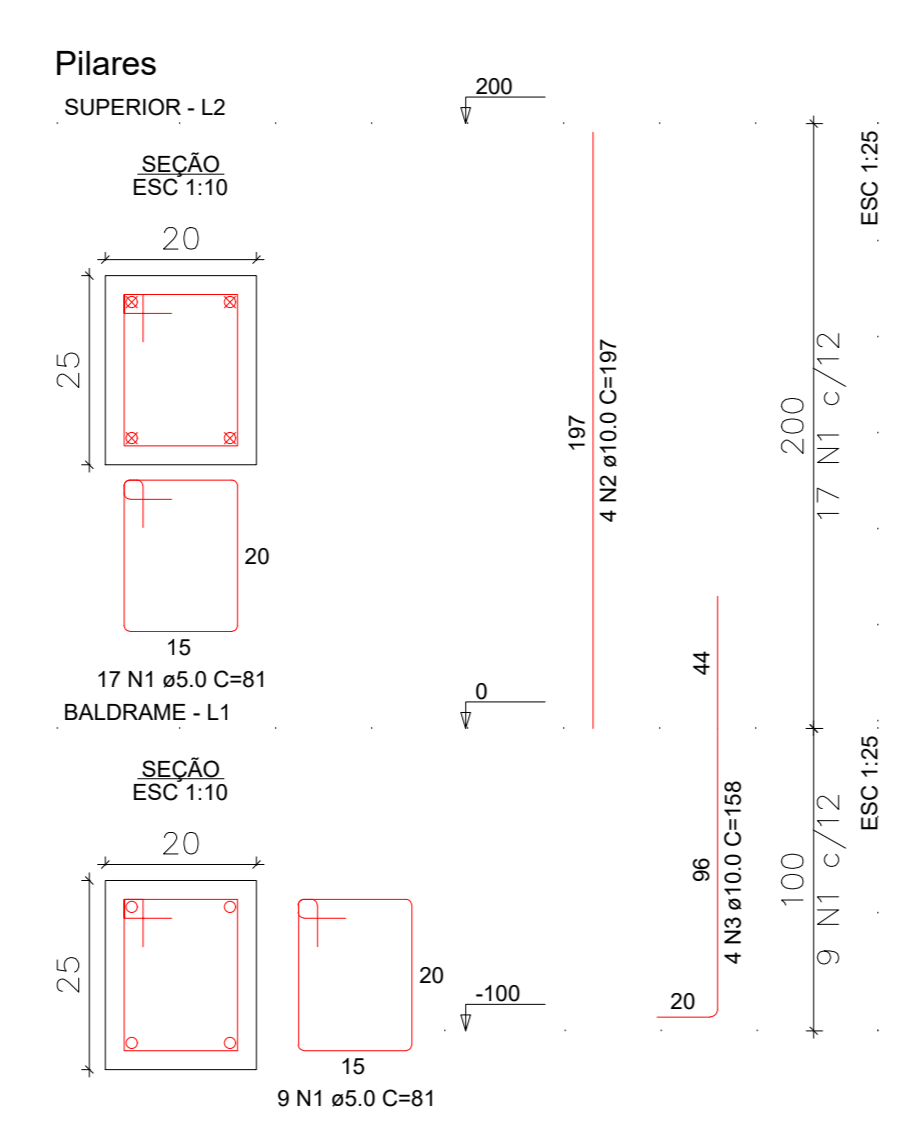
Sapatas do Muro

AÇO	N	DIAM (mm)	QUANT	C.UNIT (cm)	C.TOTAL (cm)
CA50	1	8.0	12	99	1188

**RESUMO DO AÇO**

AÇO	DIAM (mm)	C.TOTAL (m)	QUANT + 0% (Barras)	PESO + 0% (kg)
CA50	8.0	11.9	1	4.7
<b>PESO TOTAL (kg)</b>				<b>17.268</b>
<b>CA50</b>				<b>= 169.20</b>

Volume de concreto (C-20) = 0.15 m³ (x36) = 5.4m³  
Área de forma = 0.84 m² (x36) = 30.24



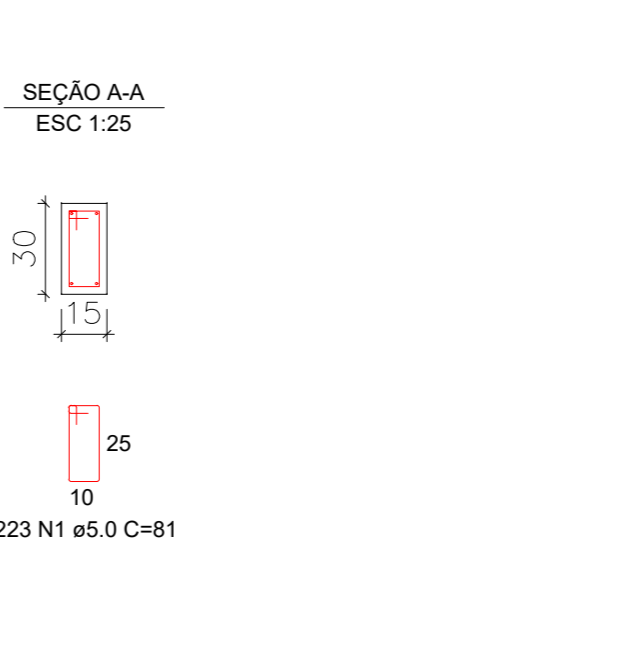
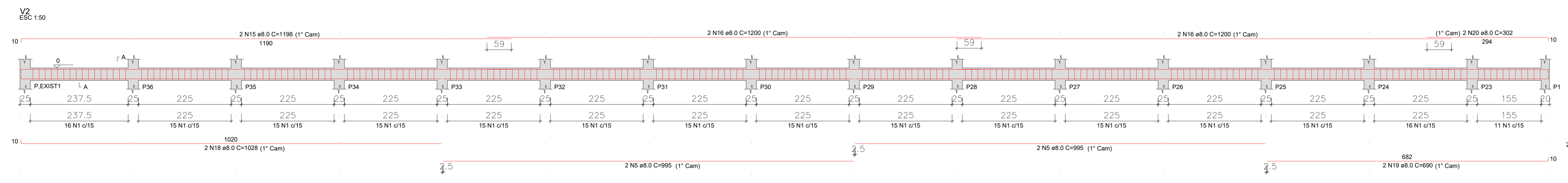
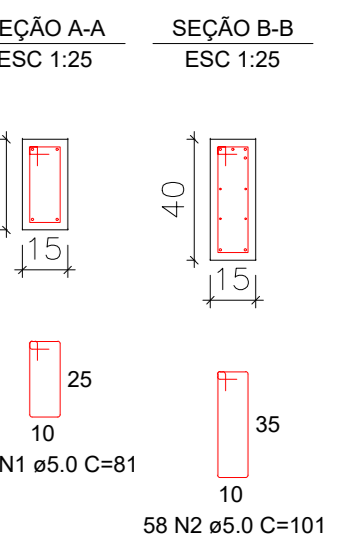
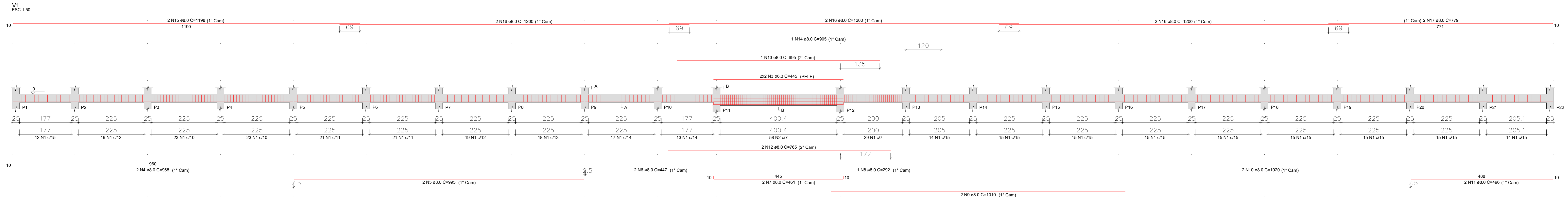
**RELAÇÃO DO AÇO**

AÇO	N	DIAM (mm)	QUANT	C.UNIT (cm)	C.TOTAL (cm)
P14.2					
P24.1					
P42.2					
P41.1					
P41.2					
P61.1					
P61.2					
P62.2					
P61.1					
P104.1					
P104.2					
P124.1					
P124.2					
P144.1					
P144.2					
P164.1					
P164.2					
P184.1					
P184.2					
P204.1					
P204.2					
P224.1					
P224.2					
P244.1					
P244.2					
P264.1					
P264.2					
P284.1					
P284.2					
P304.1					
P304.2					
P324.1					
P324.2					
P344.1					
P344.2					
P364.1					
P364.2					

**RESUMO DO AÇO**

AÇO	DIAM (mm)	C.TOTAL (m)	QUANT + 0% (Barras)	PESO + 0% (kg)
CA50	10.0	497	42	306.4
CA60	8.0	796.8	66	121.9
<b>PESO TOTAL (kg)</b>				<b>308.4</b>
<b>CA50</b>				<b>= 121.9</b>

Volume de concreto (C-20) = 4.72 m³  
Área de forma = 94.50 m²



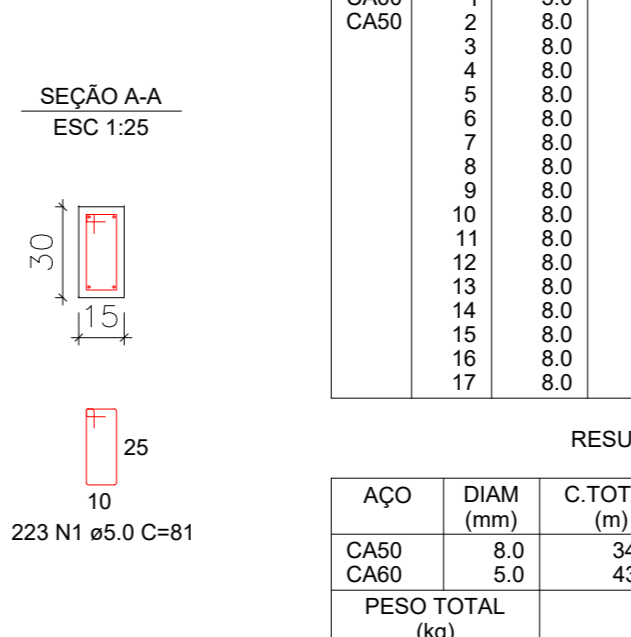
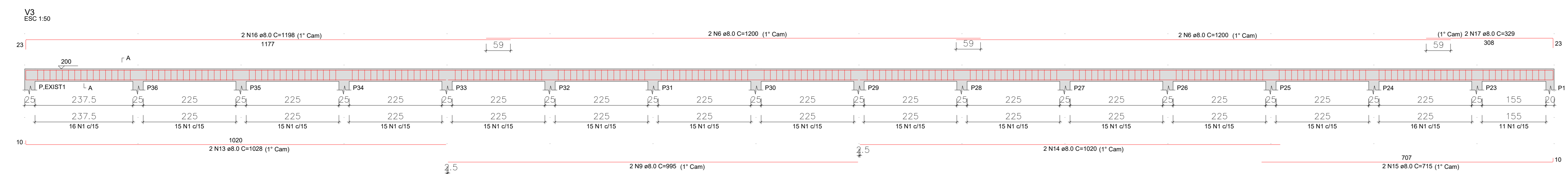
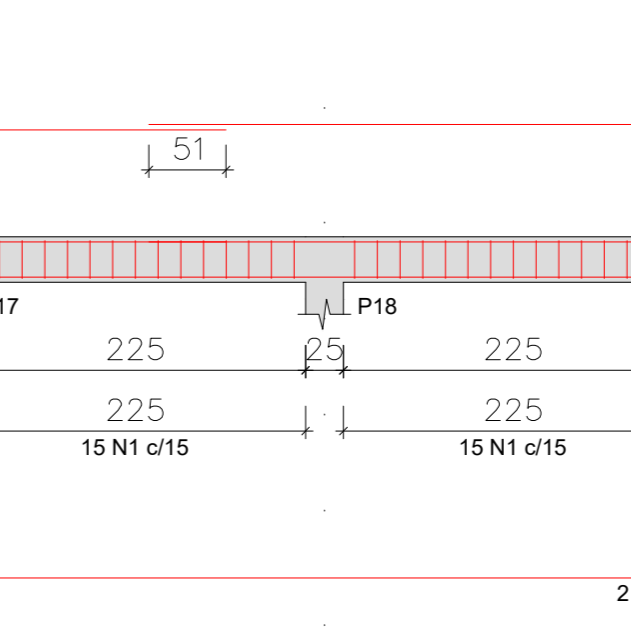
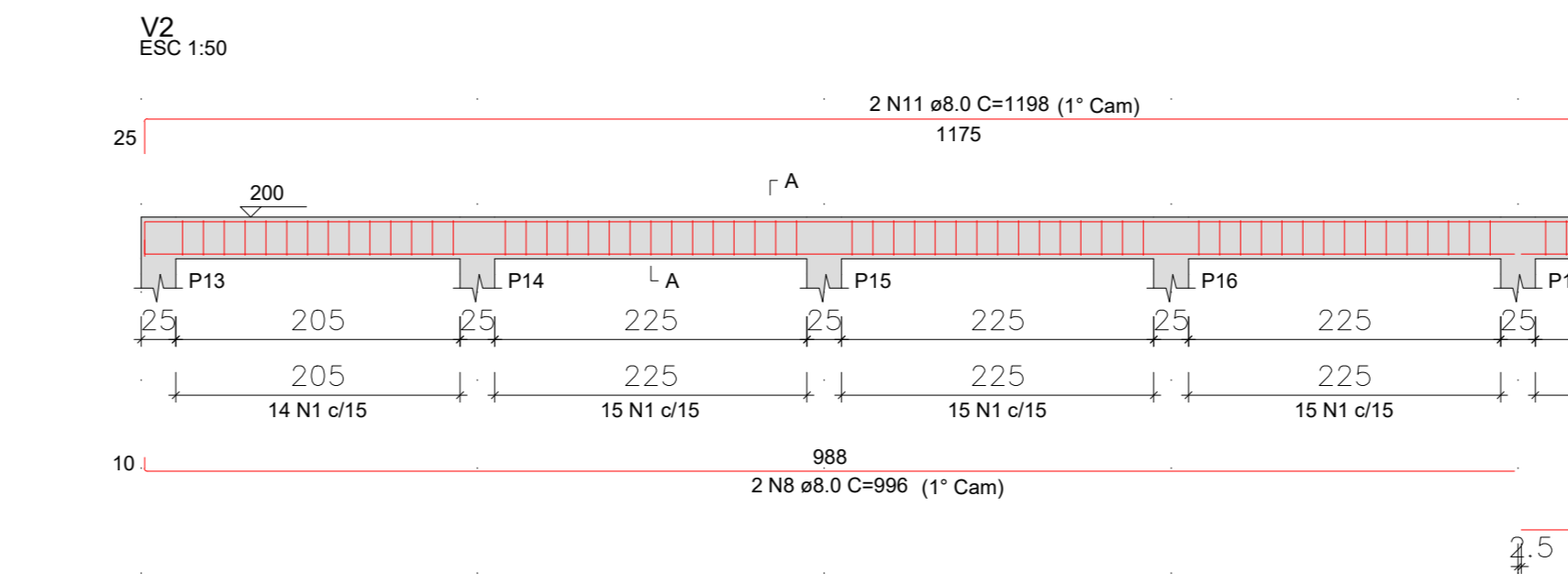
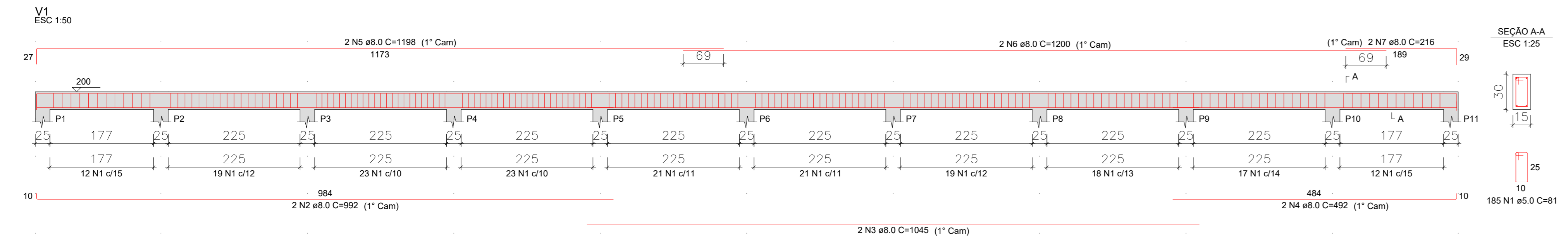
**RELAÇÃO DO AÇO**

AÇO	N	DIAM (mm)	QUANT	C.UNIT (cm)	C.TOTAL (cm)
CA60	1	5.0	81	81	4321
CA60	2	5.0	58	101	6858
CA60	4	5.0	4	445	1780
CA60	4	5.0	2	868	1936
CA60	5	5.0	6	995	5970
CA60	6	5.0	2	447	894
CA60	6	5.0	2	461	922
CA60	8	5.0	1	292	292
CA60	8	5.0	2	1010	2020
CA60	10	5.0	2	1020	2040
CA60	11	5.0	2	496	992
CA60	12	5.0	2	765	1530
CA60	13	5.0	1	995	995
CA60	14	5.0	1	955	955
CA60	15	5.0	4	1198	4792
CA60	16	5.0	10	1200	12000
CA60	17	5.0	2	779	1558
CA60	18	5.0	2	1028	2056
CA60	19	5.0	2	996	1992
CA60	20	5.0	2	302	604

**RESUMO DO AÇO**

AÇO	DIAM (mm)	C.TOTAL (m)	QUANT + 0% (Barras)	PESO + 0% (kg)
CA50	8.3	17.8	34	4.4
CA60	5.0	321.1	44	160.1
<b>PESO TOTAL (kg)</b>				<b>164.5</b>
<b>CA60</b>				<b>= 80.3</b>

Volume de concreto (C-20) = 3.69 m³  
Área de forma = 68.37 m²



**RELAÇÃO DO AÇO**

AÇO	N	DIAM (mm)	QUANT	C.UNIT (cm)	C.TOTAL (cm)
CA60	1	5.0	541	81	43821
CA60	2	5.0	2	952	1904
CA60	3	5.0	2	1045	2090
CA60	4	5.0	2	492	984
CA60	5	5.0	2	1198	2396
CA60	6	5.0	6	1200	7200
CA60	7	5.0	2	216	432
CA60	8	5.0	2	996	1992
CA60	9	5.0	4	995	3980
CA60	10	5.0	2	296	592
CA60	11	5.0	2	1198	2396
CA60	12	5.0	2	1127	2254
CA60	13	5.0	2	1028	2056
CA60	14	5.0	2	1020	2040
CA60	15	5.0	2	715	1430
CA60	16	5.0	2	1198	2396
CA60	17	5.0	2	329	658

**RESUMO DO AÇO**

AÇO	DIAM (mm)	C.TOTAL (m)	QUANT + 0% (Barras)	PESO + 0% (kg)
CA50	8.0	347.8	29	137.2
CA60	5.0	438.2	37	175.2
<b>PESO TOTAL (kg)</b>				<b>312.4</b>
<b>CA50</b>				<b>= 137.2</b>

Volume de concreto (C-20) = 3.36 m³  
Área de forma = 62.82 m²

**PREFEITURA MUNICIPAL DE SAUGUIERO**  
**ANTÔNIO DE PÁDUA - RJ**

LOCAL DO PROJETO:  
Sauguiero - E.M. Alice do Amaral Peixoto

Rev 0

CONTEÚDO:  
Armações - Sapatas, Pilares, Vigas Baldrame e Superior

Data: 25/08/2022

**Projeto Estrutural**

Folha:  
04/04