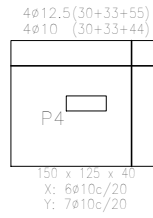
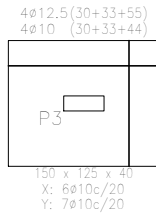
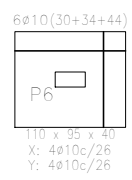
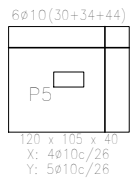


Fundação
Fundação
Concreto: C20, em geral
Escala: 1:50



QUADRO DE ELEMENTOS DE FUNDAÇÃO				
Referências	Dimensões (cm)	Altura (cm)	Armadura inf. X	Armadura inf. Y
P1, P2 e P5	120x105	40	4ø10c/26	5ø10c/26
P3	150x125	40	6ø10c/20	7ø10c/20
P4	150x125	40	6ø10c/20	7ø10c/20
P6	110x95	40	4ø10c/26	4ø10c/26



Projeto: FILIPE_PRADO		Data: 26/07/2021
AÇO CA 50 - FCK = 20 MPA		
Local: SANTO ANTÔNIO DE PÁDUA		
Nome: VESTIÁRIO PÇA CAMPO ALEGRE		
Des.no.:	Planta: TENSÃO ADM SOLO = 2 KGF/CM2 FUNDAÇÃO	
Autor: HENRIQUE DOS SANTOS BASTOS		