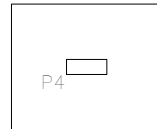
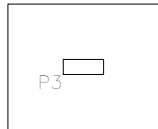
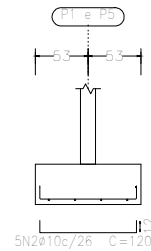
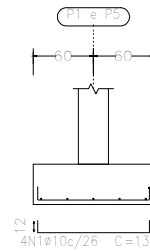


Fundação
 Detalhamento fundação
 Concreto: C20, em geral
 Escala: 1:50

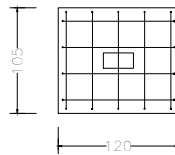
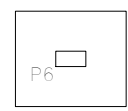
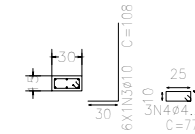
Elemento	Pos.	Diam.	Q.	Dob. (cm)	Retã (cm)	Dob. (cm)	Comp. (cm)	Total (cm)	CA-50-A (kg)	CA-60-B (kg)
P1=P5	1	ø10	4	12	111	12	135	540	3,4	
	2	ø10	5	12	96	12	120	600	3,8	
	3	ø10	6	30	78		108	648	4,1	
	4	ø4.2	3		77		77	231		0,3
								Total:	11,3	0,3
								(x2):	22,6	0,6
								ø4.2:	0,0	0,6
								ø10:	22,6	0,0
								Total:	22,6	0,6



P1 e P5



P1 e P5



Resumo Aço Fundação	Comp. total (m)	Peso (kg)	Total
CA-50-A ø10	121,3	76	
ø12.5	9,4	9	85
CA-60-B ø4.2	15,1	2	2
Total			87

Projeto: FILIPE_PRADO		Data: 26/07/2021
AÇO CA 50 - FCK = 20 MPA		
Local:	SANTO ANTÔNIO DE PÁDUA	
Nome:	VESTIÁRIO PÇA CAMPO ALEGRE	
Des.no.:	Planta: TENSÃO ADM SOLO = 2 KGF/CM2 DETALHAMENTO DE FUNDAÇÃO	
Autor:	HENRIQUE DOS SANTOS BASTOS	