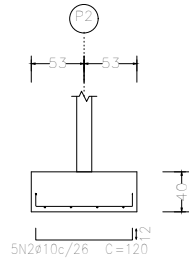
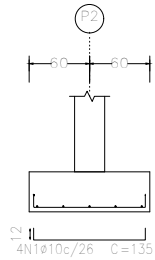
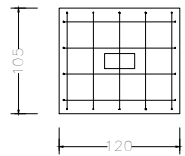
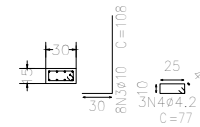


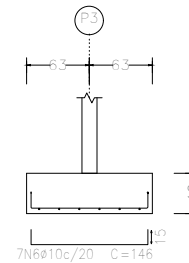
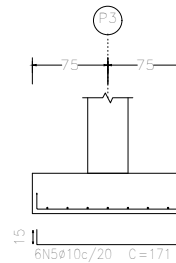
P2



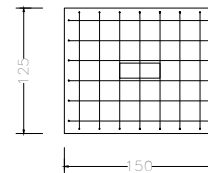
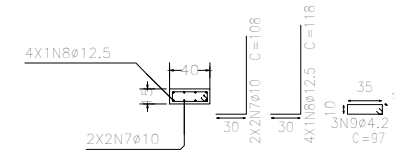
P2



P3



P3



Resumo Aço Fundação		Comp. total (m)	Peso (kg)	Total
Detalhamento fundação				
CA-50-A	ø10	121.3	76	
	ø12.5	9.4	9	85
CA-60-B	ø4.2	15.1	2	2
Total				87

Elemento	Pos.	Diam.	Q.	Dob. (cm)	Reta (cm)	Dob. (cm)	Comp. (cm)	Total (cm)	CA-50-A (kg)	CA-60-B (kg)
P2	1	ø10	4	12	111	12	135	540	3.4	
	2	ø10	5	12	96	12	120	600	3.8	
	3	ø10	8	30	78		108	864	5.4	
	4	ø4.2	3		77		77	231		0.3
Total:								12.6		0.3
P3	5	ø10	8	15	141	15	171	1026	6.4	
	6	ø10	7	15	116	15	146	1022	6.4	
	7	ø10	4	30	78		108	432	2.7	
	8	ø12.5	4	30	88		118	472	4.6	
	9	ø4.2	3		97		97	291		0.3
Total:								20.1		0.3
								ø4.2:	0.0	0.6
								ø10:	28.1	0.0
								ø12.5:	4.6	0.0
Total:								32.7		0.6

Projeto: FILIPE_PRADO		Data: 26/07/2021
AÇO CA 50 - FCK = 20 MPA		
Local: SANTO ANTÔNIO DE PÁDUA		
Nome: VESTIÁRIO PÇA CAMPO ALEGRE		
Des.no.:	Planta: TENSÃO ADM SOLO = 2 KGF/CM2 DETALHAMENTO DE FUNDAÇÃO	
Autor: HENRIQUE DOS SANTOS BASTOS		