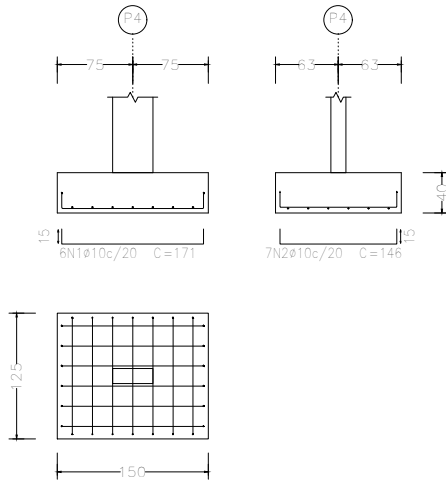
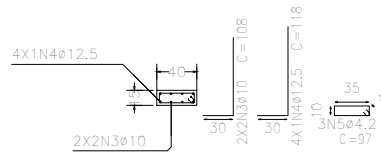


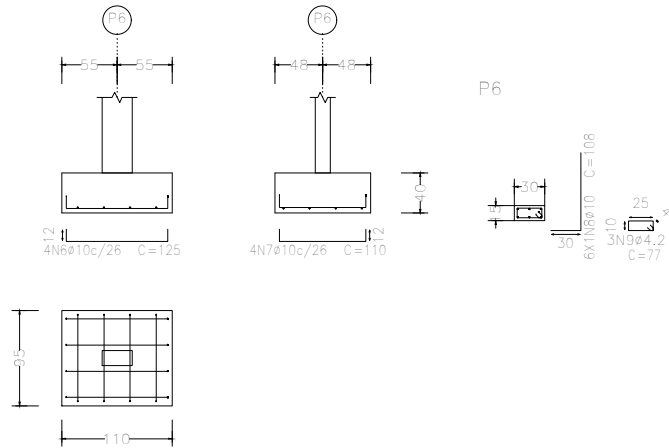
P4



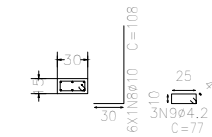
P4



P6



P6



Resumo Aço Fundação	Comp. total (m)	Peso (kg)	Total
CA-50-A	121.3	76	85
	9.4	9	
CA-60-B	15.1	2	2
Total			87

Elemento	Pos.	Diam.	Q.	Dob. (cm)	Reta (cm)	Dob. (cm)	Comp. (cm)	Total (cm)	CA-50-A (kg)	CA-60-B (kg)	
P4	1	ø10	6	15	141	15	171	1026	6.4		
	2	ø10	7	15	116	15	146	1022	6.4		
	3	ø10	4	30	78		108	432	2.7		
	4	ø12.5	4	30	88		118	472	4.6		
	5	ø4.2	3		97		97	291		0.3	
Total:									20.1	0.3	
P6	6	ø10	4	12	101	12	125	500	3.1		
	7	ø10	4	12	86	12	110	440	2.8		
	8	ø10	6	30	78		108	648	4.1		
	9	ø4.2	3		77		77	231		0.3	
Total:									10.0	0.3	
									ø4.2:	0.0	0.6
									ø10:	25.5	0.0
									ø12.5:	4.6	0.0
Total:									30.1	0.6	

Projeto:	FILIPE_PRADO	Data:	26/07/2021
AÇO CA 50 - FCK = 20 MPA			
Local:	SANTO ANTÔNIO DE PÁDUA		
Nome:	VESTIÁRIO PÇA CAMPO ALEGRE		
Des.no.:	Planta: TENSÃO ADM SOLO = 2 KGF/CM2 DETALHAMENTO DE FUNDAÇÃO		
Autor:	HENRIQUE DOS SANTOS BASTOS		