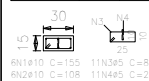
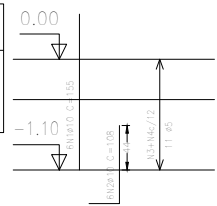


P1=P5=P6

Aço	Pos.	Diam.	Q.	Comp. (cm)	Total (cm)	x 3 (cm)
CA-50-A	1	ø10	6	155	930	2790
"	2	ø10	6	108	648	1944
CA-60-B	3	ø5	11	82	902	2706
"	4	ø5	11	24	264	792



4N1ø10 C=155 11N3ø5 C=82
6N2ø10 C=108 11N4ø5 C=24

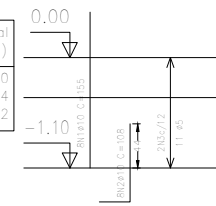


P2

Aço	Pos.	Diam.	Q.	Comp. (cm)	Total (cm)
CA-50-A	1	ø10	8	155	1240
"	2	ø10	8	108	864
CA-60-B	3	ø5	22	66	1452



6N1ø10 C=155 2x11N3ø5 C=66
8N2ø10 C=108

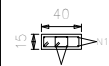


Resumo Aço PISO TÉRREO Pilares	Comp. total (m)	Peso (kg)	Total
CA-50-A ø10	89.3	56	
ø12.5	22.6	22	78
CA-60-B ø5	85.1	13	13
Total			91

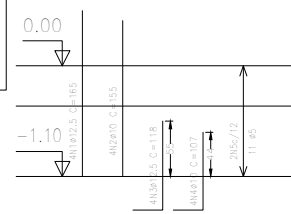
Pilares que terminam em PISO TÉRREO
Concreto: C20, em geral
Aço: CA-50-A e CA-60-B
Escala: 1:50

P3=P4

Aço	Pos.	Diam.	Q.	Comp. (cm)	Total (cm)	x 2 (cm)
CA-50-A	1	ø12.5	4	165	660	1320
"	2	ø10	4	155	620	1240
"	3	ø12.5	4	118	472	944
"	4	ø10	4	107	428	856
CA-60-B	5	ø5	22	81	1782	3564



4N1ø12.5 C=165 4N2ø10 C=155
4N3ø12.5 C=118 4N4ø10 C=107
2x11N3ø5 C=81



Projeto: FILIPE_PRADO		Data: 26/07/2021
AÇO CA 50 - FCK = 20 MPA		
Local: SANTO ANTÔNIO DE PÁDUA		
Nome: VESTIÁRIO PÇA CAMPO ALEGRE		
Des.no.:	Planta: TENSÃO ADM SOLO = 2 KGF/CM2 ARMAÇÃO DE PILARES	
Autor: HENRIQUE DOS SANTOS BASTOS		