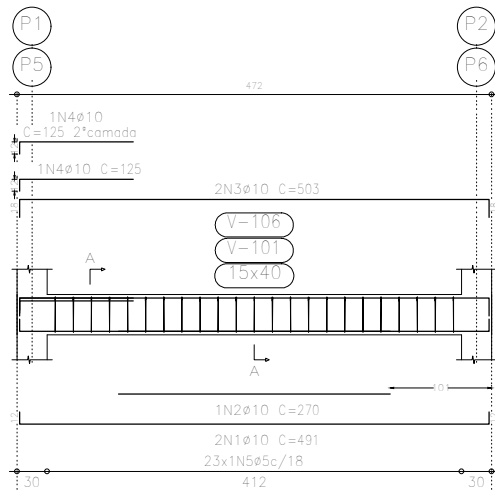
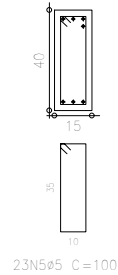


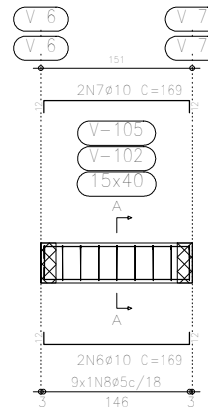
V 1
V 5
Escala 1:50



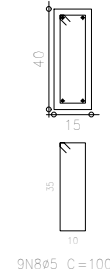
Corte A
Escala 1:20



V 2
V 4
Escala 1:50



Corte A
Escala 1:20



Elemento	Pos.	Diam.	Q.	Dob. (cm)	Reta (cm)	Dob. (cm)	Comp. (cm)	Total (cm)	CA-50-A (kg)	CA-60-B (kg)
V 1=V 5	1	ø10	2	12	467	12	491	982	6.2	
	2	ø10	1		270		270	270	1.7	
	3	ø10	2	18	467	18	503	1006	6.3	
	4	ø10	2	12	113		125	250	1.6	
	5	ø5	23				100	2300		3.6
								Total:	15.8	3.6
								(x2):	31.6	7.2
V 2=V 4	6	ø10	2	12	145	12	169	338	2.1	
	7	ø10	2	12	145	12	169	338	2.1	
	8	ø5	9				100	900		1.4
								Total:	4.2	1.4
								(x2):	8.4	2.8
								ø5:	0.0	10.0
								ø10:	40.0	0.0
								Total:	40.0	10.0

PISO TÉRREO
Desenho de vigas
Concreto: C20, em geral
Aço: CA-50-A e CA-60-B
Escala vigas: 1:50
Escala seções: 1:20

Resumo Aço	Comp. total (m)	Peso (kg)	Total
PISO TÉRREO			
Vigas			
CA-50-A ø6.3	25.8	6	
ø10	167.9	105	
ø12.5	23.8	23	134
CA-60-B ø5	168.0	26	26
Total			160

Projeto: FILIPE_PRADO		Data: 26/07/2021
AÇO CA 50 - FCK = 20 MPA		
Local:	SANTO ANTÔNIO DE PÁDUA	
Nome:	VESTIÁRIO PÇA CAMPO ALEGRE	
Des.no.:	Planta: TENSÃO ADM SOLO = 2 KGF/CM2 ARMAÇÃO DE VIGAS	
Autor: HENRIQUE DOS SANTOS BASTOS		