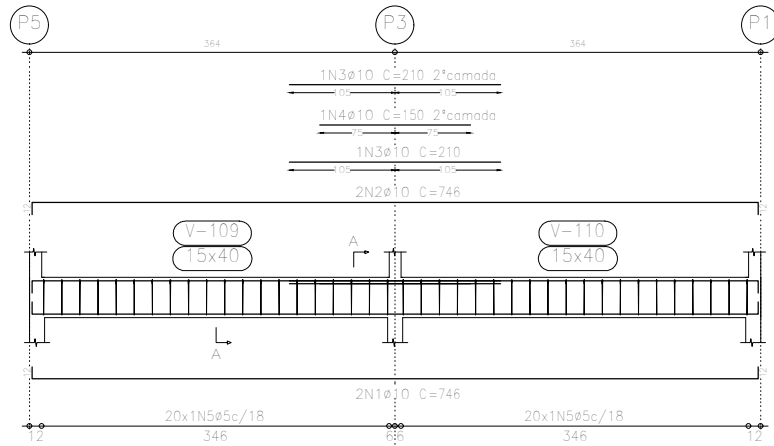
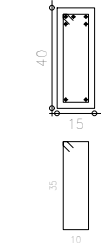


V 7
Escala 1:50

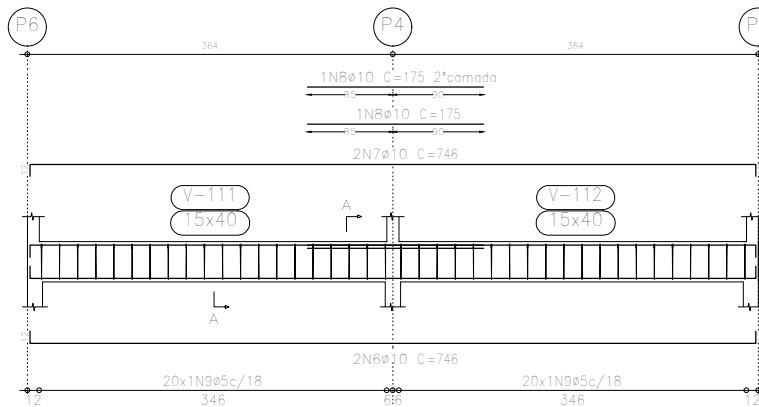


Corte A
Escala 1:20

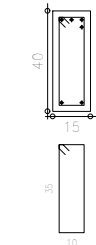


40N5ø5 C=100

V 8
Escala 1:50



Corte A
Escala 1:20



40N9ø5 C=100

Elemento	Pos.	Diam.	Q.	Dob. (cm)	Reta (cm)	Dob. (cm)	Comp. (cm)	Total (cm)	CA-50-A (kg)	CA-60-B (kg)	
V 7	1	ø10	2	12	722	12	746	1492	9.4		
	2	ø10	2	12	722	12	746	1492	9.4		
	3	ø10	2		210		210	420	2.6		
	4	ø10	1		150		150	150	0.9		
	5	ø5	40				100	4000		6.3	
Total:									22.3	6.3	
V 8	6	ø10	2	12	722	12	746	1492	9.4		
	7	ø10	2	12	722	12	746	1492	9.4		
	8	ø10	2		175		175	350	2.2		
	9	ø5	40				100	4000		6.3	
Total:									21.0	6.3	
									ø5:	0.0	12.6
									ø10:	43.3	0.0
Total:									43.3	12.6	

PISO TERREO
Desenho de vigas
Concreto: C20, em geral
Aço: CA-50-A e CA-60-B
Escala vigas: 1:50
Escala seções: 1:20

Projeto: FILIPE_PRADO		Data: 26/07/2021
AÇO CA 50 - FCK = 20 MPA		
Local: SANTO ANTÔNIO DE PÁDUA		
Nome: VESTIÁRIO PÇA CAMPO ALEGRE		
Des.no.:	Planta: TENSÃO ADM SOLO = 2 KGF/CM2 ARMAÇÃO DE VIGAS	
Autor: HENRIQUE DOS SANTOS BASTOS		