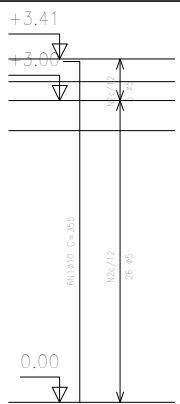


P1



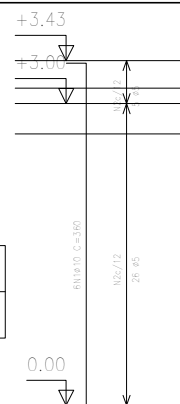
Aço	Pos.	Diam.	Q.	Comp. (cm)	Total (cm)
CA-50-A	1	ø10	6	355	2130
CA-60-B	2	ø5	31	66	2046



4N1010 C=355 31N205 C=66

Pilares que terminam em TELHADO 1
 Concreto: C20, em geral
 Aço: CA-50-A e CA-60-B
 Escala: 1:50

P3

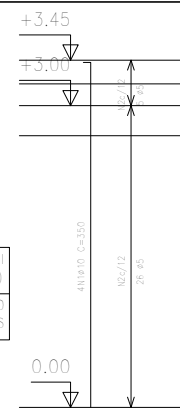


Aço	Pos.	Diam.	Q.	Comp. (cm)	Total (cm)
CA-50-A	1	ø10	6	360	2160
CA-60-B	2	ø5	31	66	2046



4N1010 C=360 31N205 C=66

P5



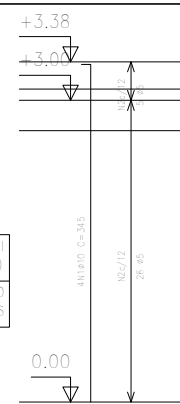
Aço	Pos.	Diam.	Q.	Comp. (cm)	Total (cm)
CA-50-A	1	ø10	4	350	1400
CA-60-B	2	ø5	31	66	2046



4N1010 C=350 31N205 C=66

Resumo Aço TELHADO 1 Pilares	Comp. total (m)	Peso (kg)	Total
CA-50-A ø10	108.4	68	68
CA-60-B ø5	133.0	21	21
Total			89

P6

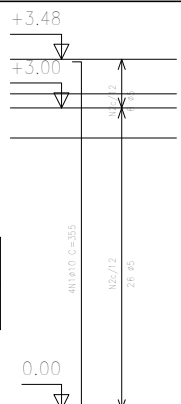


Aço	Pos.	Diam.	Q.	Comp. (cm)	Total (cm)
CA-50-A	1	ø10	4	345	1380
CA-60-B	2	ø5	31	66	2046



4N1010 C=345 31N205 C=66

P2

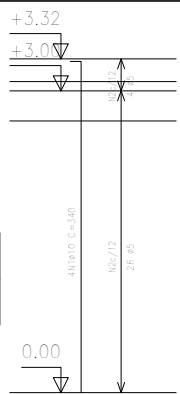


Aço	Pos.	Diam.	Q.	Comp. (cm)	Total (cm)
CA-50-A	1	ø10	4	355	1420
CA-60-B	2	ø5	32	66	2112



4N1010 C=355 32N205 C=66

P4



Aço	Pos.	Diam.	Q.	Comp. (cm)	Total (cm)
CA-50-A	1	ø10	4	340	1360
CA-60-B	2	ø5	30	66	1980



4N1010 C=340 30N205 C=66

Projeto:	FILIFE_PRADO	Data:	26/07/2021
AÇO CA 50 - FCK = 20 MPA			
Local:	SANTO ANTÔNIO DE PÁDUA		
Nome:	QUIOSQUES PÇA CAMPO ALEGRE		
Des.no.:	Planta: TENSÃO ADM SOLO = 2 KGF/CM2 ARMAÇÃO DE PILARES		
Autor:	HENRIQUE DOS SANTOS BASTOS		