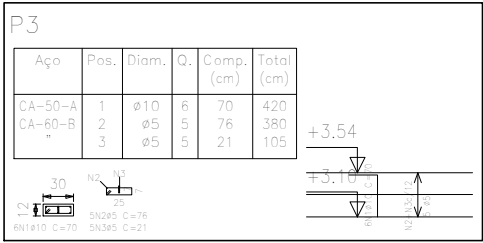
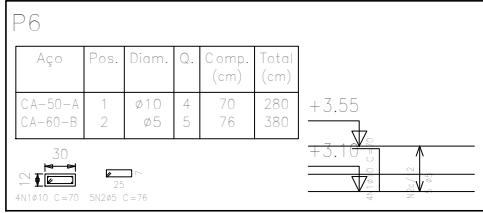
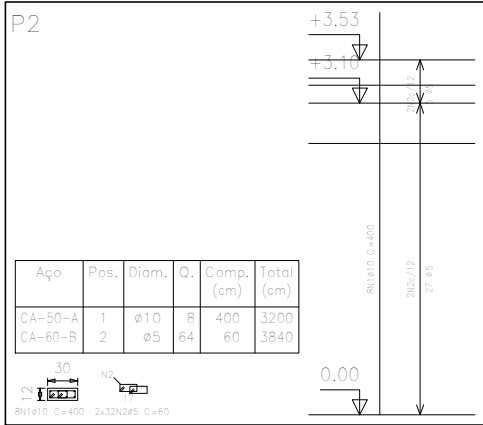
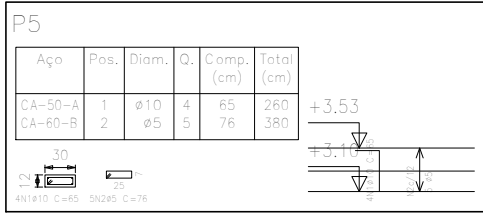


Pilares que terminam em TELHADO 1  
 Concreto: C20, em geral  
 Aço: CA-50-A e CA-60-B  
 Escala: 1:50



Resumo Aço TELHADO 1 Pilares	Comp. total (m)	Peso (kg)	Total
CA-50-A ø10	64.4	40	40
CA-60-B ø5	81.9	13	13
Total			53



Projeto: FILIPE_PRADO		Data: 26/07/2021
AÇO CA 50 - FCK = 20 MPA		
Local: SANTO ANTÔNIO DE PÁDUA		
Nome: VESTIÁRIO PÇA CAMPO ALEGRE		
Des.no.:	Planta: TENSÃO ADM SOLO = 2 KGF/CM2	
ARMAÇÃO DE PILARES		
Autor: HENRIQUE DOS SANTOS BASTOS		