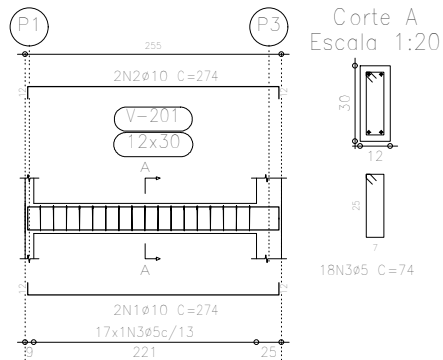
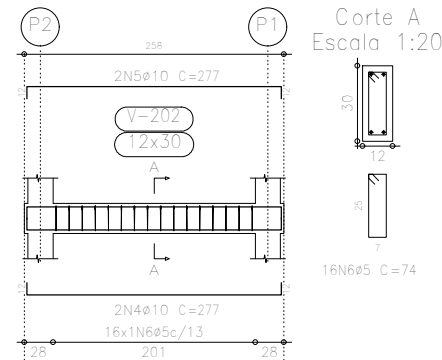


Elemento	Pos.	Diam.	Q.	Dob. (cm)	Reta (cm)	Dob. (cm)	Comp. (cm)	Total (cm)	CA-50-A (kg)	CA-60-B (kg)
V 1	1	ø10	2	12	250	12	274	548	3,4	
	2	ø10	2	12	250	12	274	548	3,4	
	3	ø5	17				74	1258		2,0
	Total:								6,8	2,0
V 2	4	ø10	2	12	253	12	277	554	3,5	
	5	ø10	2	12	253	12	277	554	3,5	
	6	ø5	16				74	1184		1,9
	Total:								7,0	1,9
V 3	7	ø10	2	12	253	12	277	554	3,5	
	8	ø10	2	12	253	12	277	554	3,5	
	9	ø5	19				74	1406		2,2
	Total:								7,0	2,2
V 4	10	ø10	2	12	245	12	269	538	3,4	
	11	ø10	2	12	245	12	269	538	3,4	
	12	ø5	16				74	1184		1,9
	Total:								6,8	1,9
								ø5:	0,0	8,0
								ø10:	27,6	0,0
								Total:	27,6	8,0

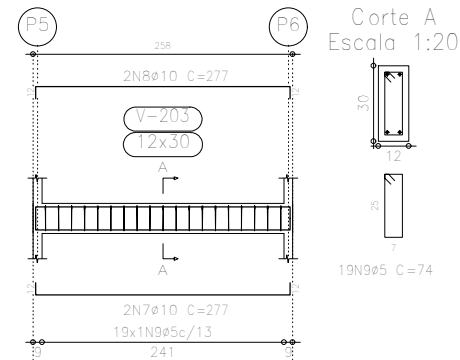
V 1
Escala 1:50



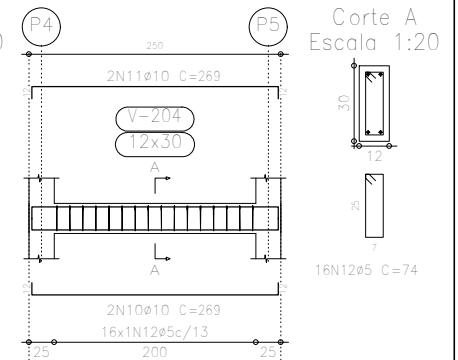
V 2
Escala 1:50



V 3
Escala 1:50



V 4
Escala 1:50



TETO TÉRREO
Desenho de vigas
Concreto: C20, em geral
Aço: CA-50-A e CA-60-B
Escala vigas: 1:50
Escala seções: 1:20

Resumo Aço	Comp. total (m)	Peso (kg)	Total
TETO TÉRREO			
Vigas			
CA-50-A ø10	89,4	56	56
CA-60-B ø5	103,6	16	16
Total			72

Projeto: FILIPE_PRADO		Data: 26/07/2021
AÇO CA 50 - FCK = 20 MPA		
Local: SANTO ANTÔNIO DE PÁDUA		
Nome: QUIOSQUES PÇA CAMPO ALEGRE		
Des.no.:	Planta: TENSÃO ADM SOLO = 2 KGF/CM2	
	ARMAÇÃO DE VIGAS	
Autor: HENRIQUE DOS SANTOS BASTOS		