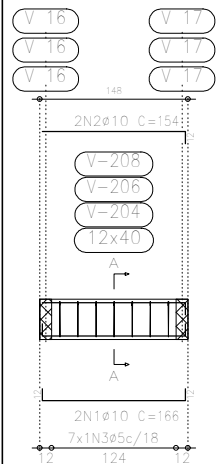
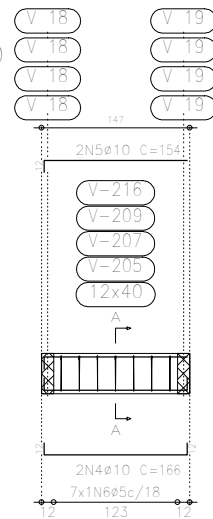
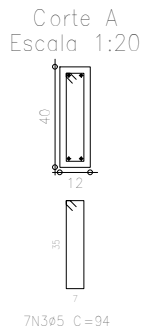


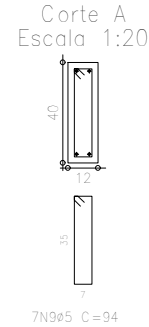
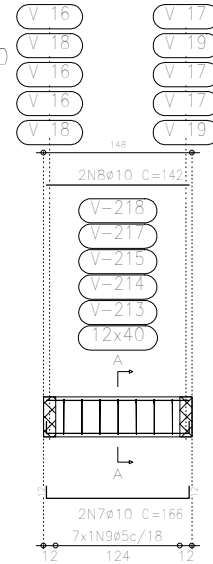
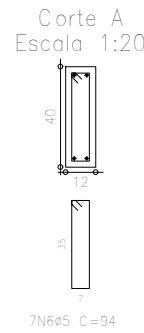
V 2  
V 4  
V 6  
Escala 1:50



V 3  
V 5  
V 7  
V 12  
Escala 1:50



V 9  
V 10  
V 11  
V 13  
V 14  
Escala 1:50



TETO TERREO\_LAJE RESERVATÓRIO  
Desenho de vigas  
Concreto: C20, em geral  
Aço: CA-50-A e CA-60-B  
Escala vigas: 1:50  
Escala seções: 1:20

Elemento	Pos.	Diam.	Q.	Dob. (cm)	Reta (cm)	Dob. (cm)	Comp. (cm)	Total (cm)	CA-50-A (kg)	CA-60-B (kg)
V 2=V 4=V 6	1	ø10	2	12	142	12	166	332	2.1	
	2	ø10	2		142		154	308	1.9	
	3	ø5	7				94	658		1.0
								Total: (x3):	4.0	1.0
V 3=V 5=V 7=V 12	4	ø10	2	12	142	12	166	332	2.1	
	5	ø10	2	12	142		154	308	1.9	
	6	ø5	7				94	658		1.0
								Total: (x4):	4.0	1.0
V 9=V 10=V 11=V 13 V 14	7	ø10	2	12	142	12	166	332	2.1	
	8	ø10	2		142		142	284	1.8	
	9	ø5	7				94	658		1.0
								Total: (x5):	3.9	1.0
									19.5	5.0
								ø5:	0.0	12.0
								ø10:	47.5	0.0
								Total:	47.5	12.0

Projeto: FILIPE_PRADO		Data: 26/07/2021
AÇO CA 50 - FCK = 20 MPA		
Local: SANTO ANTÔNIO DE PÁDUA		
Nome: VESTIÁRIO PÇA CAMPO ALEGRE		
Des.no.:	Planta: TENSÃO ADM SOLO = 2 KGF/CM2 ARMAÇÃO DE VIGAS	
Autor: HENRIQUE DOS SANTOS BASTOS		