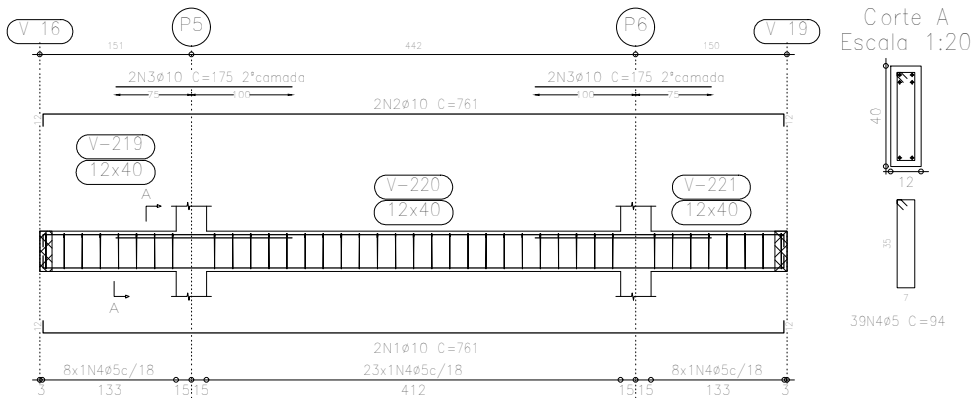
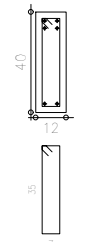


V 15
Escala 1:50



Corte A
Escala 1:20

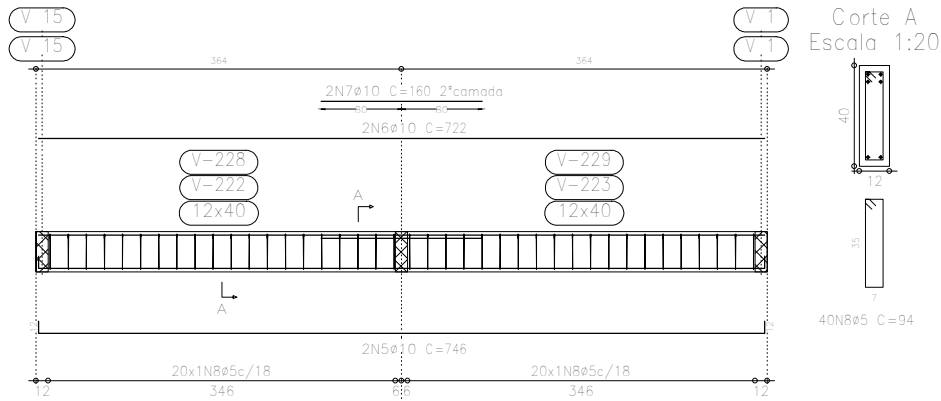


39N4ø5 C=94

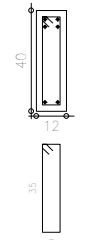
TETO TERREO_LAJE RESERVATÓRIO
Desenho de vigas
Concreto: C20, em geral
Aço: CA-50-A e CA-60-B
Escala vigas: 1:50
Escala seções: 1:20

Elemento	Pos.	Diam.	Q.	Dob. (cm)	Reta (cm)	Dob. (cm)	Comp. (cm)	Total (cm)	CA-50-A (kg)	CA-60-B (kg)	
V 15	1	ø10	2	12	737	12	761	1522	9.6		
	2	ø10	2	12	737	12	761	1522	9.6		
	3	ø10	4		175		175	700	4.4		
	4	ø5	39				94	3666		5.8	
Total:									23.6	5.8	
V 16=V 19	5	ø10	2	12	722	12	746	1492	9.4		
	6	ø10	2		722		722	1444	9.1		
	7	ø10	2		160		160	320	2.0		
	8	ø5	40				94	3760		5.9	
Total:									20.5	5.9	
(x2):									41.0	11.8	
									ø5:	0.0	17.6
									ø10:	64.6	0.0
Total:									64.6	17.6	

V 16
V 19
Escala 1:50



Corte A
Escala 1:20



40N8ø5 C=94

Projeto: FILIPE_PRADO		Data: 26/07/2021
AÇO CA 50 - FCK = 20 MPA		
Local: SANTO ANTÔNIO DE PÁDUA		
Nome: VESTIÁRIO PÇA CAMPO ALEGRE		
Des.no.:	Planta: TENSÃO ADM SOLO = 2 KGF/CM2 ARMAÇÃO DE VIGAS	
Autor: HENRIQUE DOS SANTOS BASTOS		