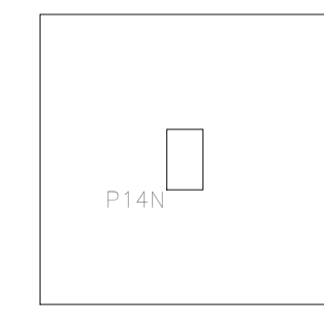
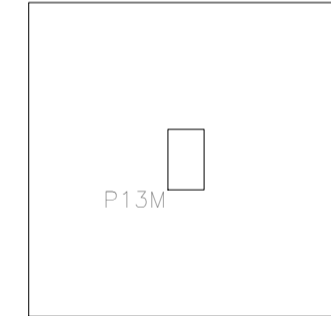
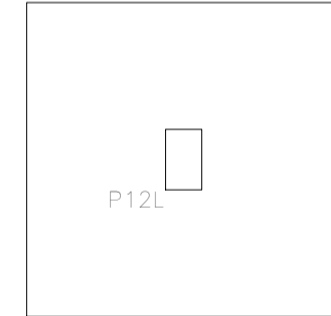
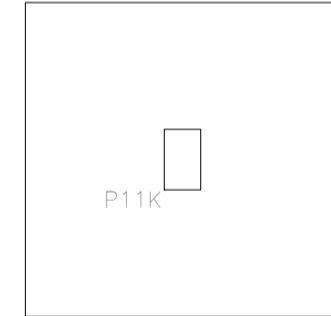
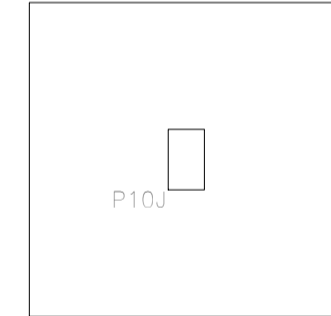
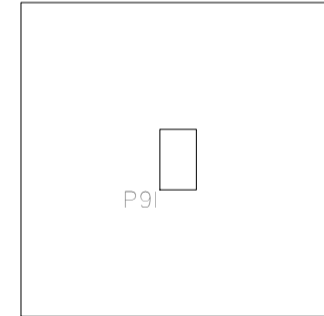
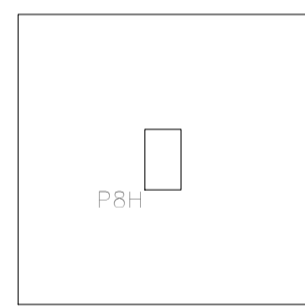
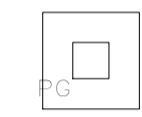
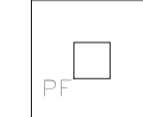
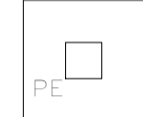
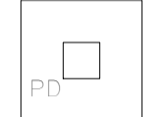
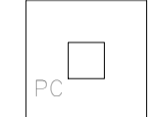
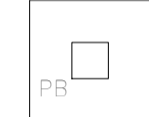
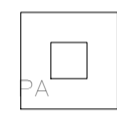


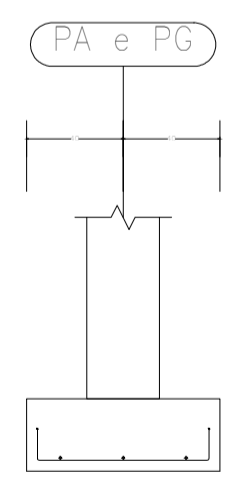
Elemento	Pos.	Diam.	Q.	Dob. (cm)	Reta (cm)	Dob. (cm)	Comp. (cm)	Total (cm)	CA-50-A (kg)	CA-60-B (kg)
PA=PG	1	ø10	3	13	71	13	97	291	1,8	
	2	ø10	3	13	71	13	97	291	1,8	
	3	ø10	8	30	68		98	784	4,9	
	4	ø6.3	5		110		110	550	1,4	
								Total:	9,9	
								(x2):	19,8	
PB=PC=PD=PE=PF	5	ø10	4	12	91	12	115	460	2,9	
	6	ø10	4	12	91	12	115	460	2,9	
	7	ø10	8	30	68		98	784	4,9	
	8	ø6.3	5		110		110	550	1,4	
								Total:	12,1	
								(x5):	60,5	
								ø6.3:	9,8	0,0
								ø10:	70,5	0,0
								Total:	80,3	0,0



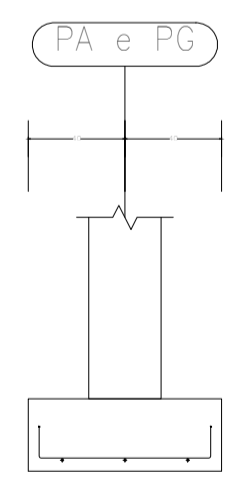
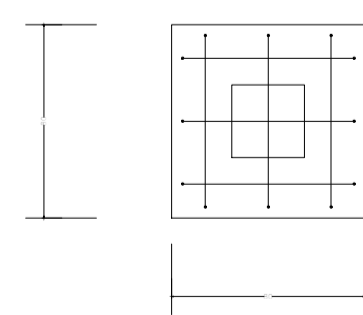
Resumo Aço Fundação	Comp. total (m)	Peso (kg)	Total
CA-50-A	ø6.3	320.5	79
	ø10	1203.6	756
	ø12.5	2486.2	2440
			3275

Fundação
Detalhamento fundação
Concreto: C20, em geral
Escala: 1:50

PA e PG

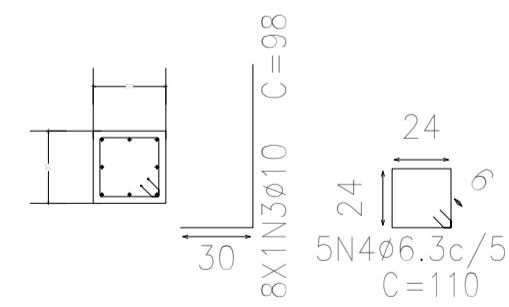


3N1ø10c/26 C=97

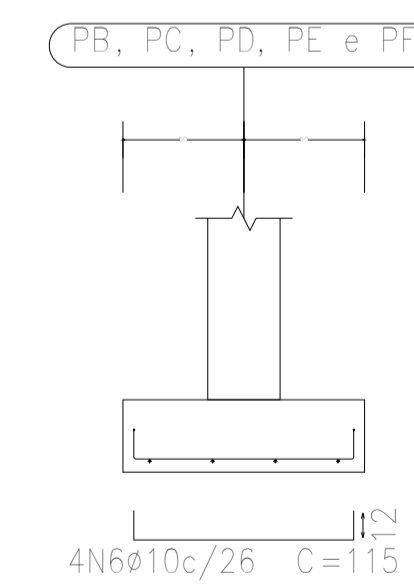
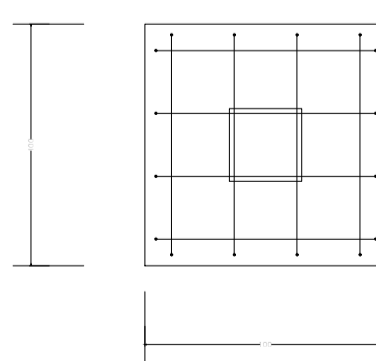
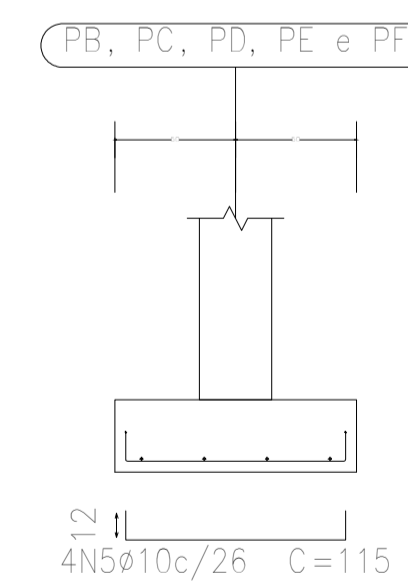


3N2ø10c/26 C=97

PA e PG

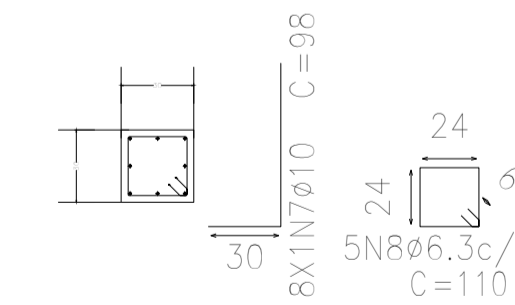


PB, PC, PD, PE e PF



4N6ø10c/26 C=115

PB, PC, PD, PE e PF



5N8ø6.3c/5 C=110

PREFEITURA MUNICIPAL DE SANTO ANTONIO DE PÁDUA	
PROJETO : MODERNIZAÇÃO DE QUADRA POLIESPORTIVA	
ENDEREÇO: DISTRITO DE IBITIGUAÇU- SANTO ANTONIO DE PÁDUA - RJ	
ESCALA:	PRANCHAS: PROJETO DE ESTRUTURAS DE CONCRETO ARMADO - FUNDAÇÕES
INDICADAS: 02/12	
AUTOR DO PROJETO: HENRIQUE DOS SANTOS BASTOS ENG. CIVIL - CRFA 470594-8/9	
Nº PROCESSO:	Nº OBSERVAÇÃO:
VISTO:	
data:	