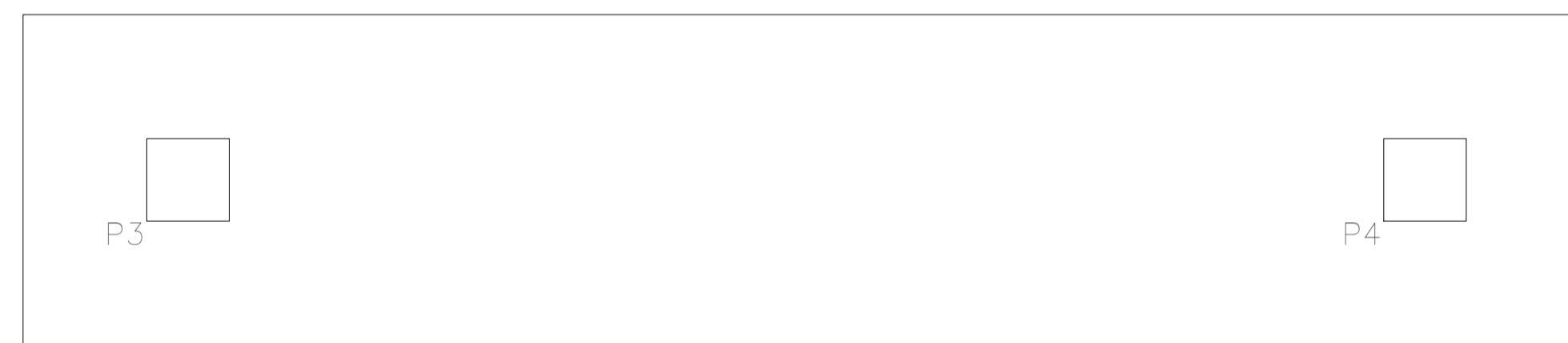


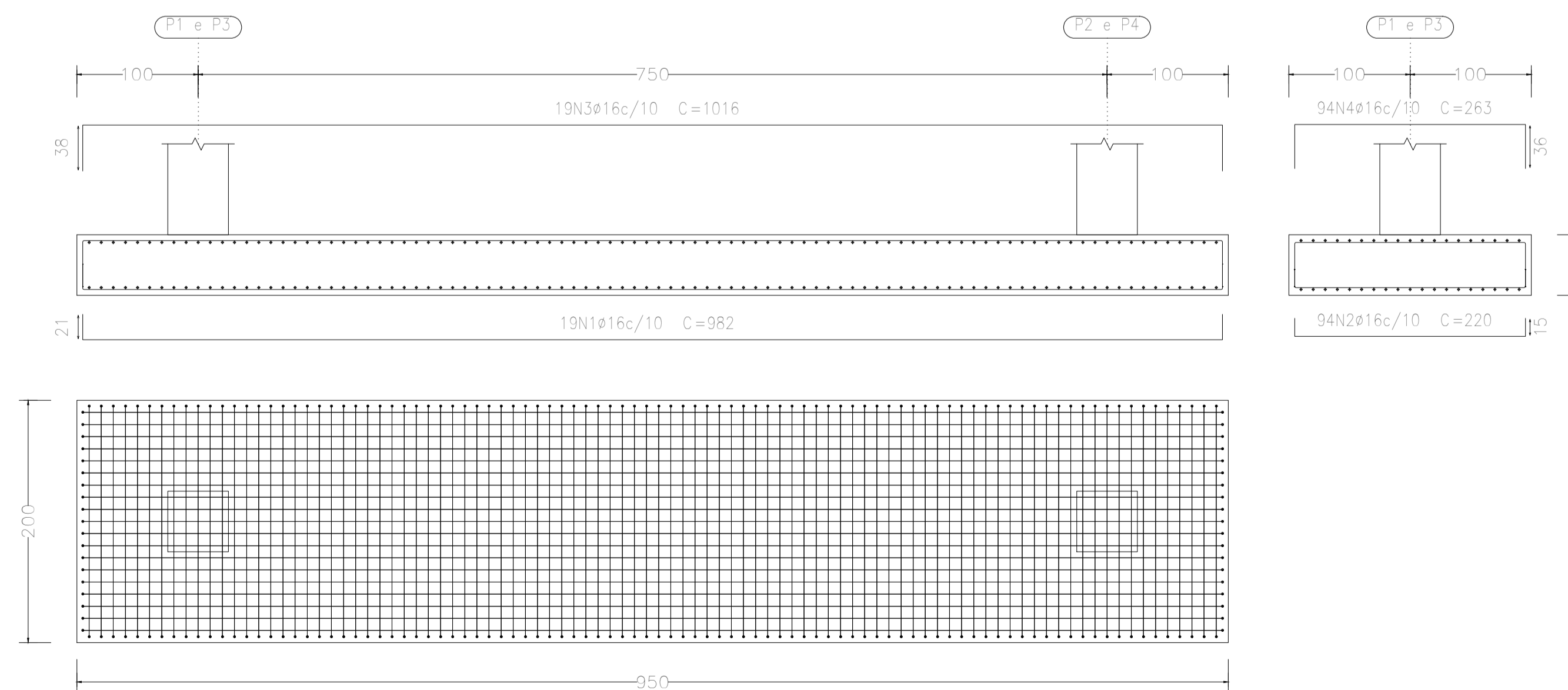


Elemento	Pos.	Diam.	Q.	Dob. (cm)	Reta (cm)	Dob. (cm)	Comp. (cm)	Total (cm)	CA-50 (kg)	CA-60 (kg)	
P1-P2=P3-P4	1	Ø16	19	21	940	21	982	18658	294.5		
	2	Ø16	94	15	190	15	220	20680	326.5		
	3	Ø16	19	38	940	38	1016	19304	304.7		
	4	Ø16	94	36	191	36	263	24722	390.3		
	5	Ø20	8	30	129		159	1272	31.4		
	6	Ø6.3	3		190		190	570	1.4		
	7	Ø20	8	30	129		159	1272	31.4		
	8	Ø6.3	3		190		190	570	1.4		
Total:									381.6		
									(x2):	763.2	
									Ø6.3:	5.6	0.0
									Ø16:	2632.0	0.0
									Ø20:	125.6	0.0
									Total:	2763.2	0.0

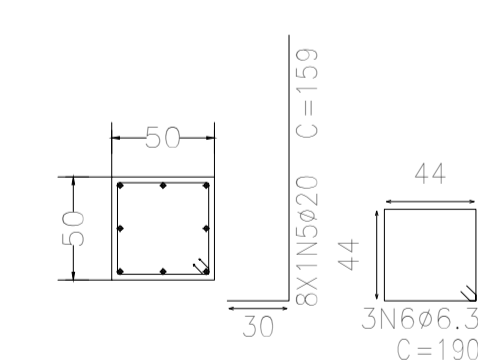
Resumo Aço Fundação Detalhamento fundação	Comp. total (m)	Peso (kg)	Total
CA-50	Ø6.3	22.8	6
	Ø16	1667.3	2632
	Ø20	50.9	125
			2763



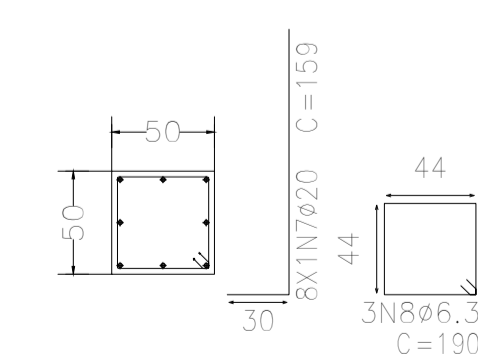
P1-P2 e P3-P4



P1 e P3



P2 e P4



Fundação
Detalhamento fundação
Concreto: C20, em geral
Escala: 1:50

Projeto:	PMSAP	Data:	08/02/2022
Local:	SANTO ANTÔNIO DE PÁDUA		
Nome:	ARMAÇÃO DE SAPATAS		
Des.no.:	Planta: BAIRRO CARVALHO PONTE RODOVIÁRIA		
Autor:	PMSAP		