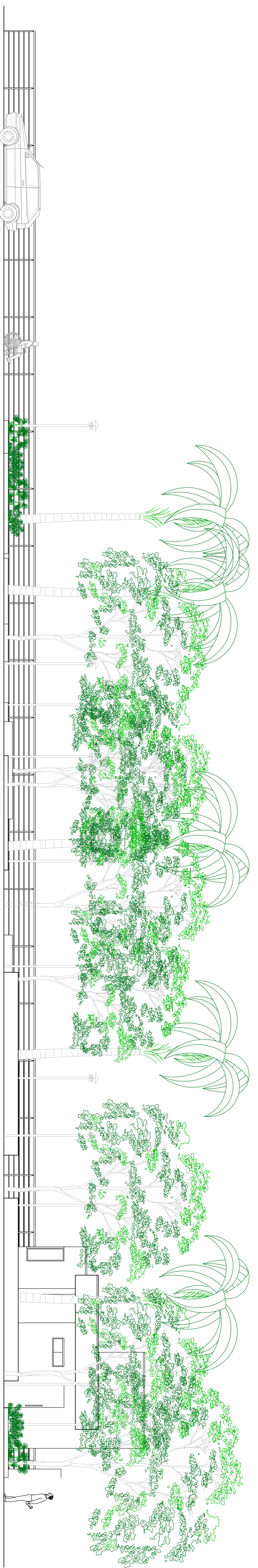
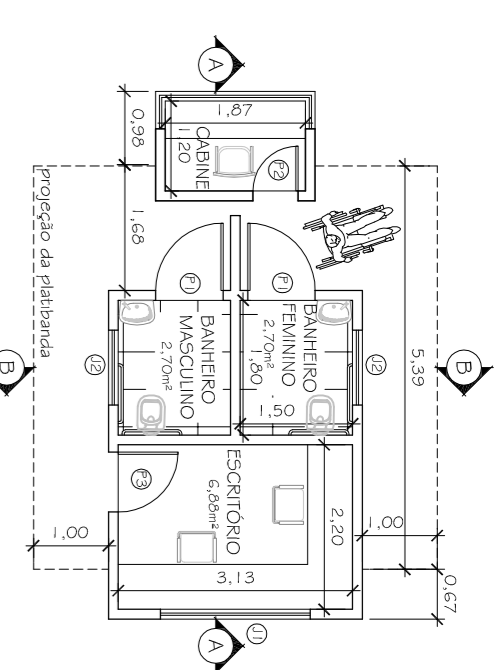




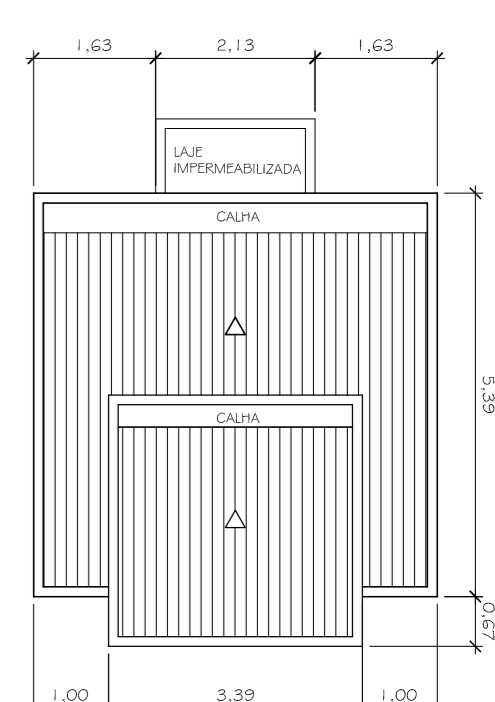
PLANTA BAIXA - PAISAGISMO
ESCALA: 1/100



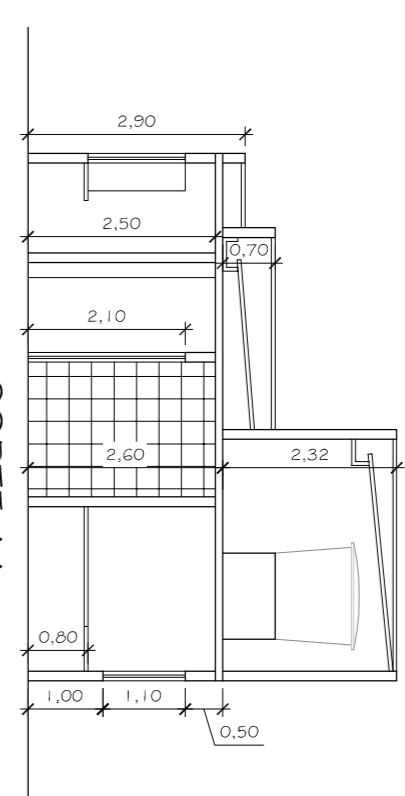
ELEVÇÃO NORDESTE
ESCALA: 1/100



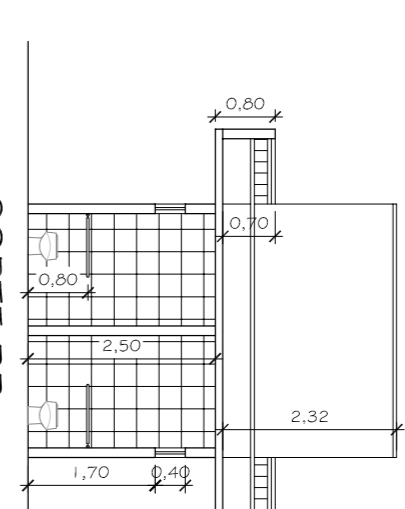
PLANTA BAIXA
ESCALA: 1/100



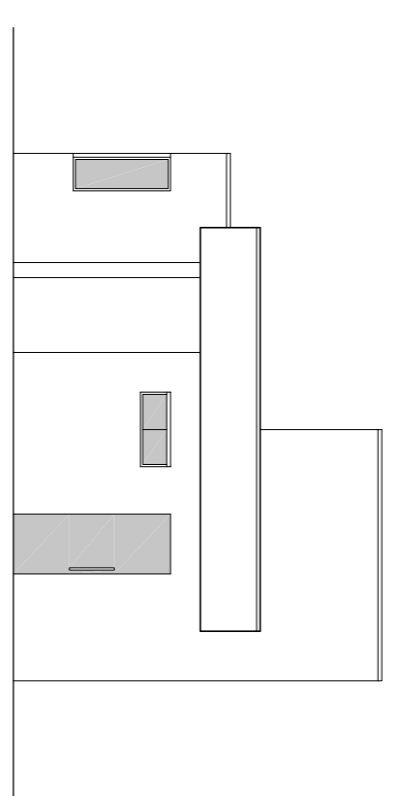
PLANTA DE COBERTURA
ESCALA: 1/100



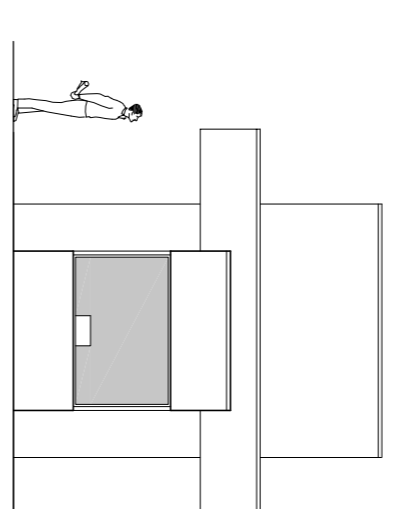
CORTE AA
ESCALA: 1/100



CORTE BB
ESCALA: 1/100



FACHADA NORDESTE
ESCALA: 1/100



FACHADA SUDESTE
ESCALA: 1/100

LEGENDA DE ESQUADRIAS

FOCIS

F1 - 0,80m X 2,10m (madeira)

F2 - 0,80m X 2,10m (vidro)

F3 - 0,80m X 2,10m (alviss)

JANELAS:

J1 - 2,00m X 1,10m X 1,20m (vidro)

J2 - 1,00m X 0,40m X 1,70m (vidro)

coordenadas geográficas: 21° 32' 22,53" S - 42° 10' 55,38" O

PREFEITURA MUNICIPAL DE SANTO ANTÔNIO DE PADUA

projeto: REFORMA DA PRAÇA CARIBÉ DA ROCHA

ENDEREÇO: RUA PRAÇA CARIBÉ DA ROCHA - CENTRO - PADUA - RJ.

ESCALA:	FRANCHA:	PLANTA DE SITUAÇÃO
INDICADAS	02/07	

Nº PROCESSO:	Nº OBSERVAÇÃO:

VISIO:

PLANO DE COTAS

data:

