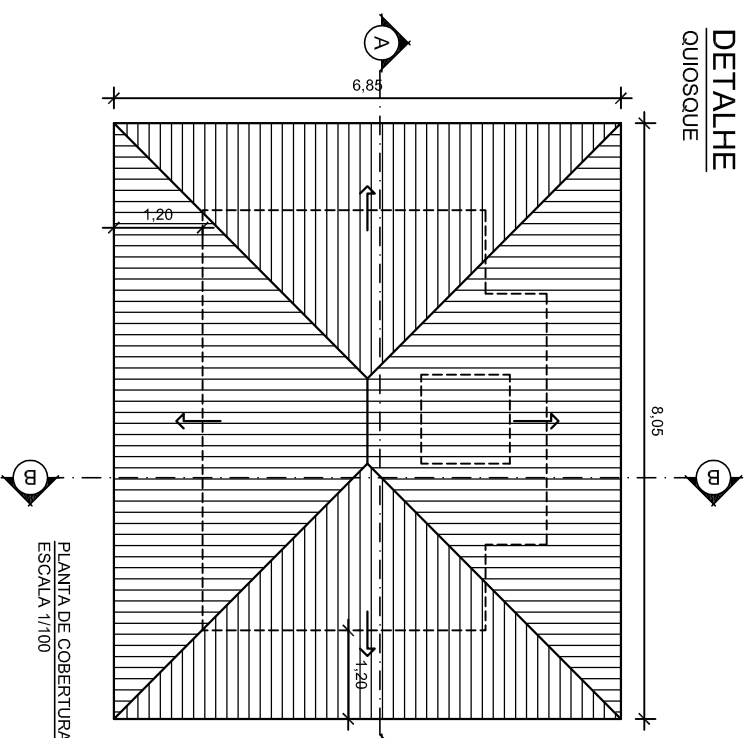
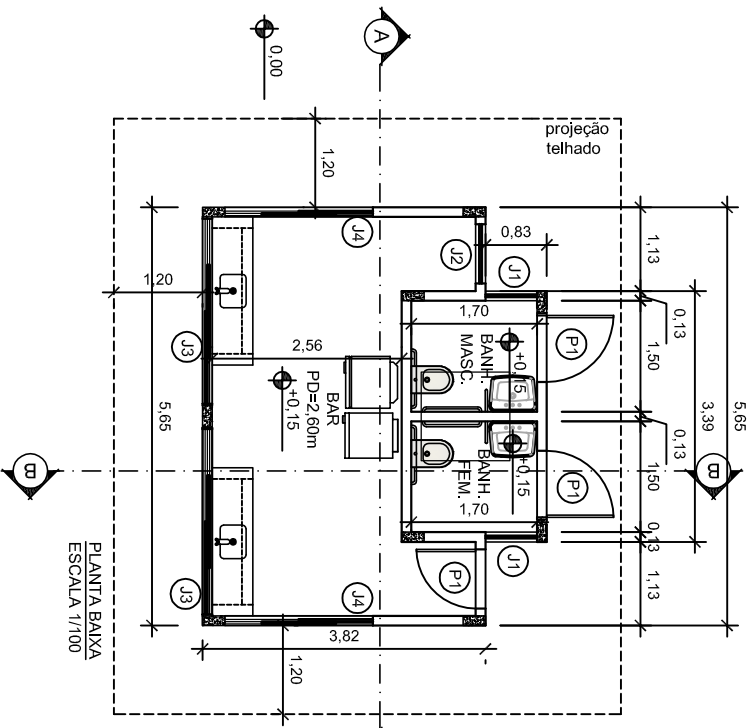


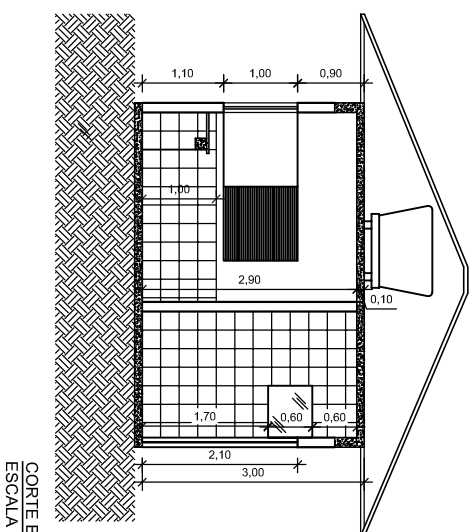
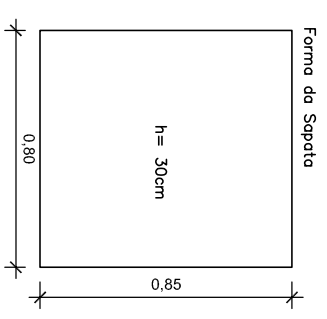
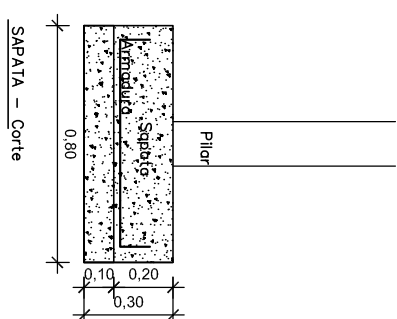
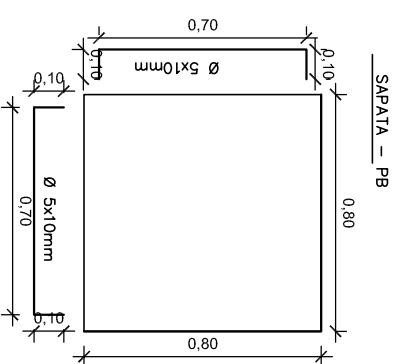
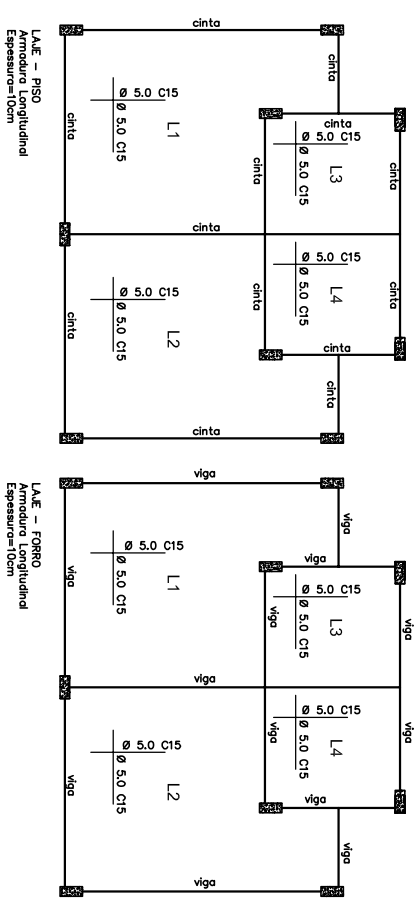
DETALHE
QUIOSQUE



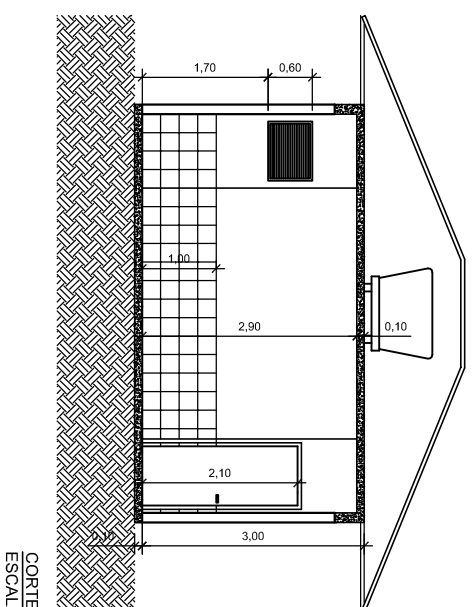
PLANTA DE COBERTURA
ESCALA 1/100



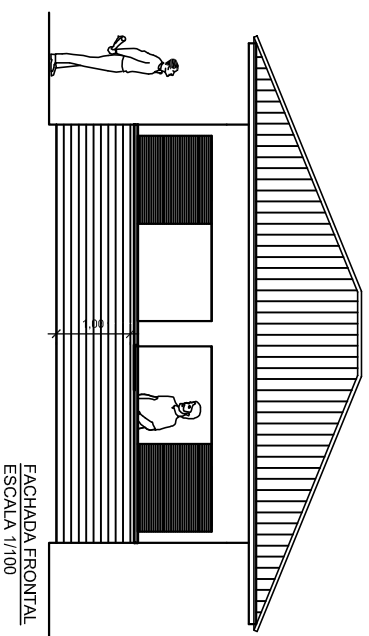
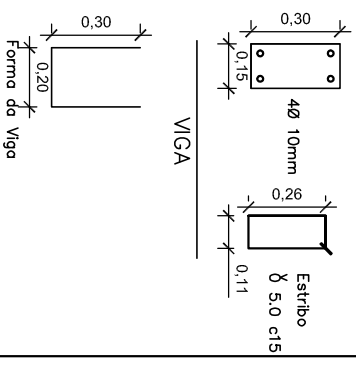
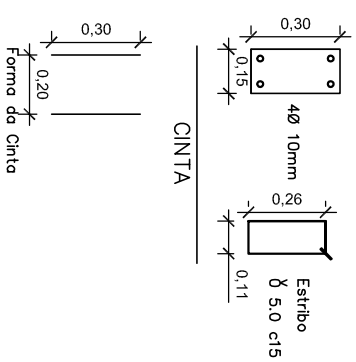
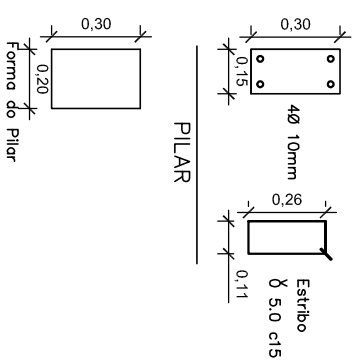
PLANTA BAIXA
ESCALA 1/100



CORTE BB
ESCALA 1/100

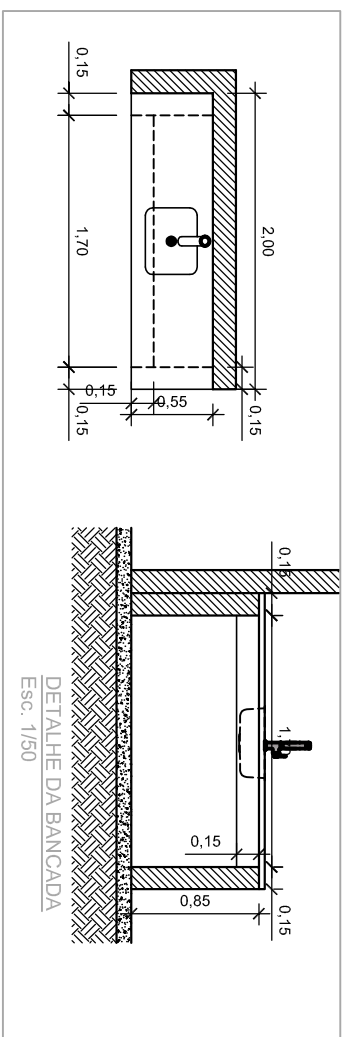


CORTE AA
ESCALA 1/100



FACHADA FRONTAL
ESCALA 1/100

- QUADRO DE ESQUADRIAS
- P1 - 0,80x2,10m
 - J1 - 0,70x0,60x1,70
 - J2 - 0,80x0,60x1,70
 - J3 - 2,50x1,00x1,10
 - J4 - 2,00x1,00x1,10



DETALHE DA BANCADA
Esc. 1/50



PREFEITURA MUNICIPAL DE SANTO ANTÔNIO DE PÁDUA

ESCALA:
Indicadas

PRANCHA:
02/09

PROJETO:
PROJETO BÁSICO PARA CONSTRUÇÃO DE PRAÇA LOCALIZADA NA AV. JOÃO JASBICK NO 1º DISTRITO DO MUNICÍPIO DE SANTO ANTÔNIO DE PÁDUA/RJ.

Nº PROCESSO:
SEI - 170026/002025/2021

Nº DA OBSERVAÇÃO:
REVISÃO

DATA:
JUNHO/2022